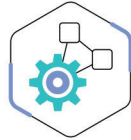




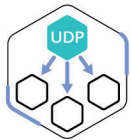
STATE-OF-THE-ART OPEN-PLATFORM
INTELLIGENT VIDEO MANAGEMENT SOFTWARE
BY AXXONSOFT



Axxon Next supports both standard PC keyboards / hot-keys and PTZ controller keyboards / joysticks



Working with cameras made even more user-friendly thanks to Intel Quick Sync Video support



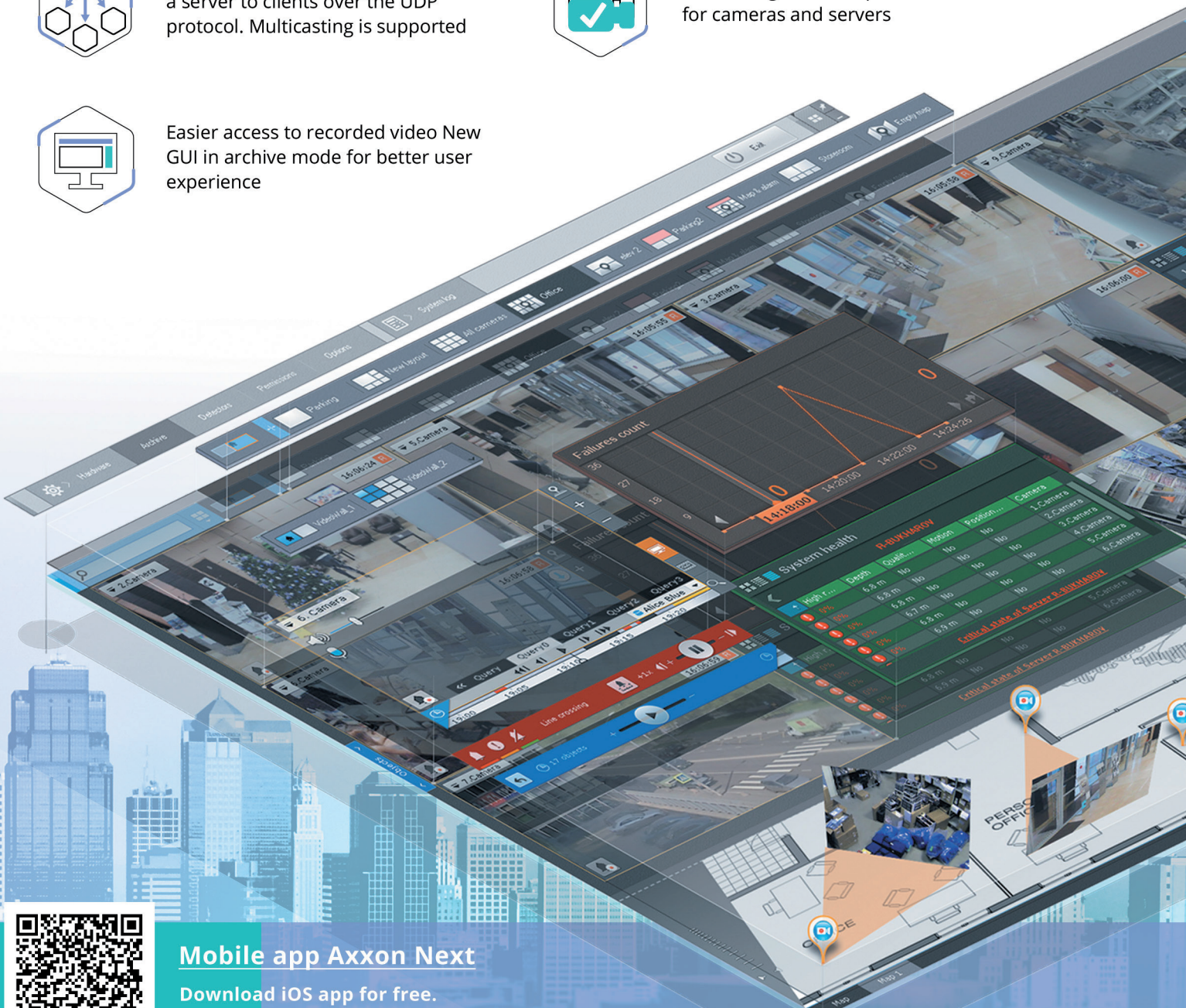
Video can be streamed from a server to clients over the UDP protocol. Multicasting is supported



New configuration capabilities for cameras and servers



Easier access to recorded video New GUI in archive mode for better user experience



Mobile app Axxon Next

Download iOS app for free.

App also available on Google Play (Android version).

Get the latest AxxonSoft news at www.axxonsoft.com | www.axxonnext.com

Features of the Axxon Next video management software



MOMENTQUEST

Near-instant forensic search of recorded video

MomentQuest is more than a search tool (although it is one). It is a set of technologies that generate metadata right at the moment of video recording. The metadata database is the basis for quick and accurate analysis of archives. To find an event of interest later, just enter the necessary criteria: motion in zones, crossing of a line, size, color, direction, speed of object motion, and more. Thumbnails of relevant video episodes are shown in seconds. All-night viewing marathons are a thing of the past now. MomentQuest has replaced them with fast, effective criteria-based forensic search.

Search in MomentQuest is fast because it is based on metadata, which is calculated for all moving objects in the field of view. The metadata contains objects' attributes that are saved as text strings to a special VMDA* database at the same time as the video itself.



FAILOVER

Maximum VMS redundancy

A server can be selected during system configuration to act as a hot standby in case of failure of a main server. The failover server automatically steps in, performing all the functions previously handled by the hardware that is temporarily off-line or malfunctioning. A special hypervisor service monitors the health of all servers in a domain.



NEW SLICK USER INTERFACE

The new Layouts screen is more functional, compact, and attractively designed.

Message Board panel displays messages about events matching user-specified filter criteria. Specified text and reaction buttons are displayed as well.

Web Board allows displaying web pages in Axxon Next layouts. This can be useful, for example, for displaying camera settings or third-party web interfaces.

New mode for editing of the layout list, in which users can remove and reorder layouts. **The archive search interface** has been redesigned. Criteria for all search types are now specified in a consistent, concise way.

Convenient selection of archive for video playback. If a camera is recording to

multiple archives, the user can select which archive to use for playback.

Switch all cameras in current layout to Archive mode now in just one click, by using a special shortcut.

The new interface in the auto-discovery wizard offers a convenient way to manage camera connections. The new interface allows for easy creation and configuration of video archives.

New Object Navigator panel. This panel contains a full list of objects in the system and provides an overview with configuration options for the relationships between objects.

The new Alarms Panel is implemented as a drop-down resizable window (and can be expanded to full screen). The alarms panel displays video thumbnails of recent alarms

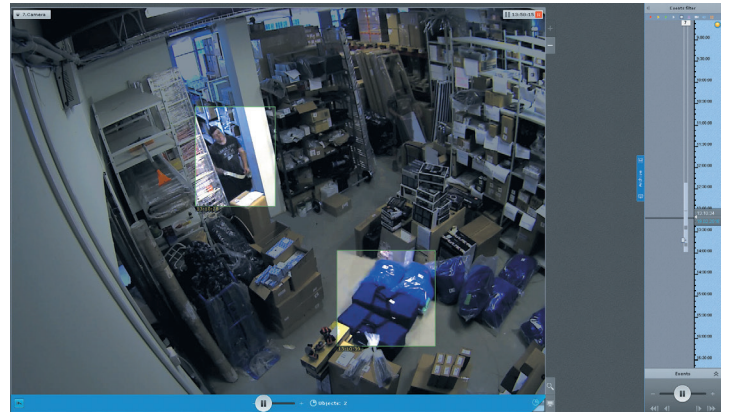
that require operator attention. Advantages of the new panel include customization of the size of the panel and alarm thumbnails, based on the number of events to be displayed. In addition to current (unclassified) alarm events, the panel allows viewing previously processed alarms.

The new look of the auto-discovery wizard offers a better experience with bulk camera addition and configuration. The new interface allows for easy creation and configuration of video archives.



TIME COMPRESSOR

Visual scene synopses



Time Compressor is a whole new paradigm for efficiency in video surveillance. All moving objects in recorded video are shown to the operator in a short video clip, compressing time but maintaining the original speed of motion of the objects. Just click an object to jump to playback of the corresponding video in normal mode.

Time Compressor is a cut-to-the-chase review of events in the scene. Efficiency in video surveillance will never be the same.



INTERACTIVE 3D MAP

Visual overview of where your cameras on a site map

The interactive 3D map is a set of ordinary raster blueprints for a site, placed on the screen under viewing tiles, which are displayed in a lifelike projection. On the map you can indicate the location of the cameras included in the layout, as well as mark sensors and detectors. Click a viewing tile to immediately see where the relevant camera is located on the map.

The interactive map lets you instantly find the location of an event recorded on a camera. This is particularly useful when cameras display footage of similar, hard-to-distinguish areas (such as visually identical building hallways).



stronger together

*VMDA is an exclusive AxxonSoft innovation, consisting of a database for indexing and storing descriptions of what is happening in the scene.